

**SUPERIOR**  
ELEVATORS



ZS Series | Platform Lift



THE ZENITH OF CREATION

**SUPERIOR**  
ELEVATORS

SINCE **1991**

Professional, Focus and Breakthrough

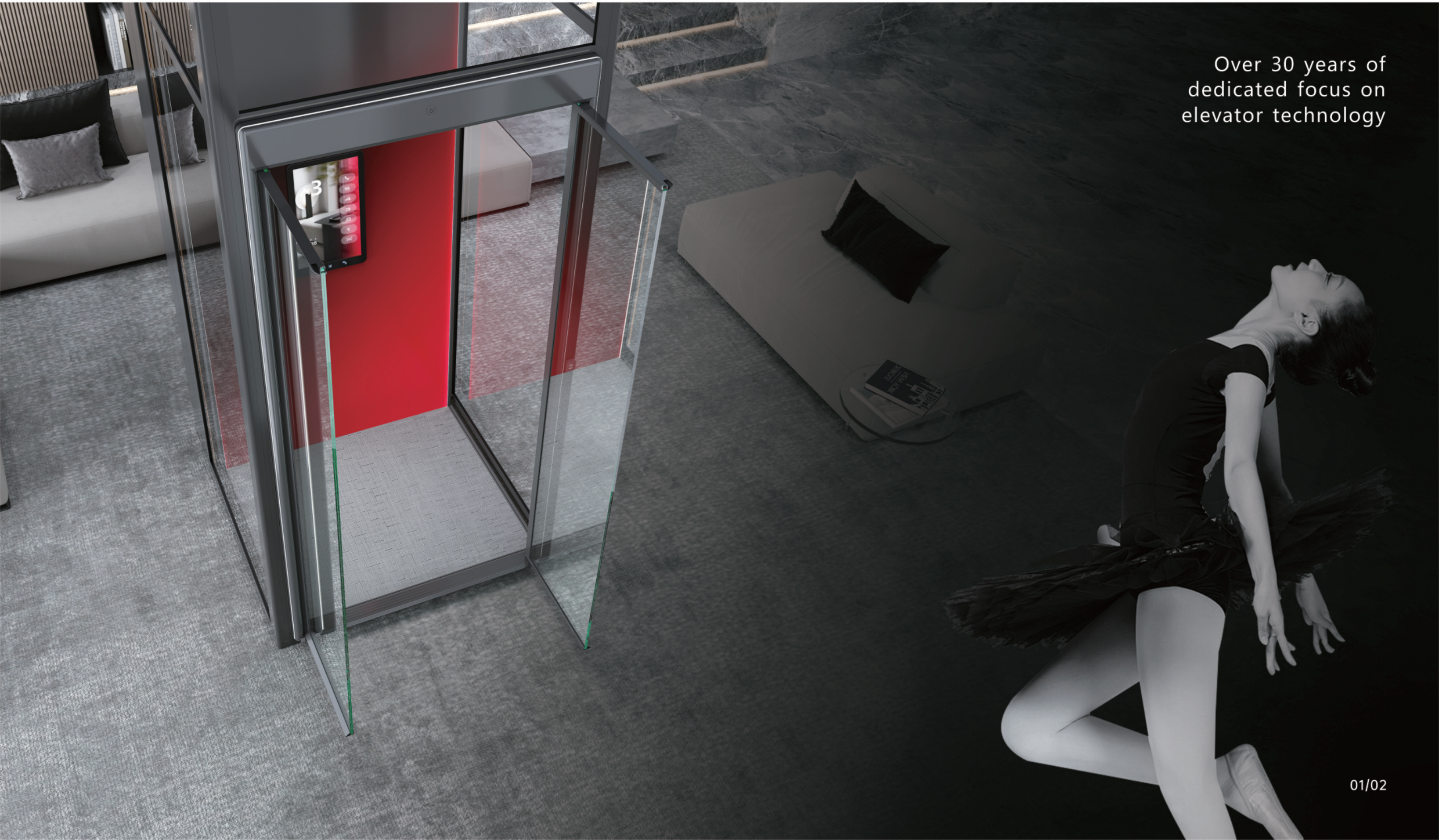




PROFESSIONAL

**SUPERIOR**  
ELEVATORS

Over 30 years of  
dedicated focus on  
elevator technology







Specializing in villa  
elevators for 10 years



BREAKTHROUGH

**SUPERIOR**  
ELEVATORS



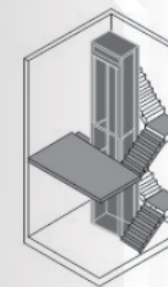
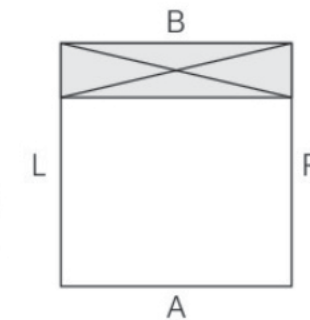
Breakthrough - More than 40 patented inventions and innovations, demonstrating technological leadership



## COMPACT DESIGN

Suitable for various layout options, including staircases surround, atrium, mid-floor, and outdoor installations

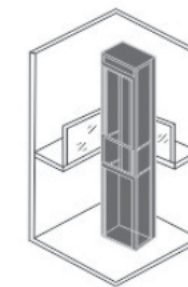
A (B) Surface Length :800-1450  
L (R) Surface Length:900-1450  
Supports size customization with  
50mm increments or decrements



Staircase  
Surround

$\geq 80\text{mm}$

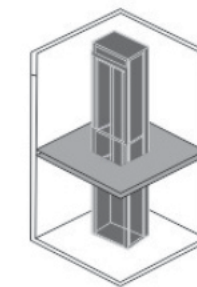
Pit



Atrium

$\geq 2250\text{mm}$

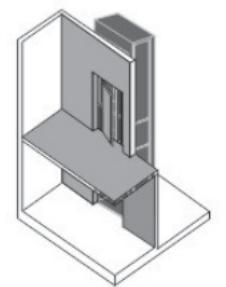
Over Head (OH)



Mid- Floor

$\geq 0.72\text{m}^2$

Area



Outdoor  
Installation





## INTELLIGENT SAFETY SYSTEM

### Power failure emergency evacuation device

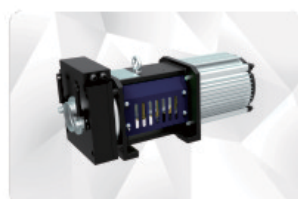
The emergency leveling mode will automatically activates and stops at the nearest landing and open the door in the event of power outage.

### Safe border protection

The platform is equipped with safety frames on three sides. When there is an obstruction, the elevator will stop immediately. After the obstruction is cleared, the elevator will resume operation.

### Ensure safety, stability and comfort at all times

The variable frequency control system, along with precise magnetic grating, ensures accurate positioning and leveling, providing a safe, comfortable, and quiet elevator ride.



Size: 580mm(L) x 220mm(W) x 315 mm(H)  
Weight: 80kg  
Swedish SKF bearing, German Heidenhain encoder  
Applicable voltage Single-phase 220V, 380V, 415V



Thickness: 4mm  
Breaking force is controlled at 37000-47000N  
Life Span of 12 million times

### One-click calling system

In the event of an elevator malfunction, the system allows for direct communication with any of the five pre-set contact numbers.

### IoT remote monitoring

Automatically alerts in the event of an elevator malfunction, and allows real-time monitoring of the elevator's parameters and operational status remotely via a mobile phone.

### Door anti-pinch protection function

When the door is opening or closing, it will automatically reverse direction if an obstruction is detected

### Safe and silent

Non-contact intelligent electronic control



# SHAFT COLOR

Fashionable and trendy colors that meet various home environment needs, offering a minimalist, elegant, and aesthetically pleasing appearance.



Gold  
ZS-CS02



Champagne Gold  
ZS-CS03



White  
ZS-CS04

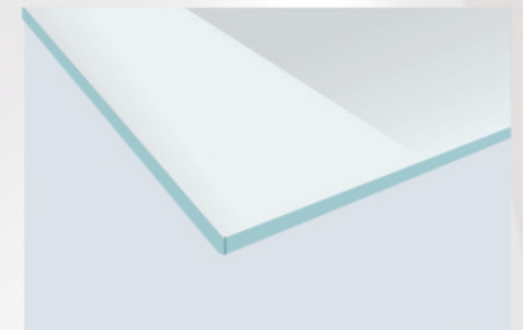


Grey  
ZS-CS01

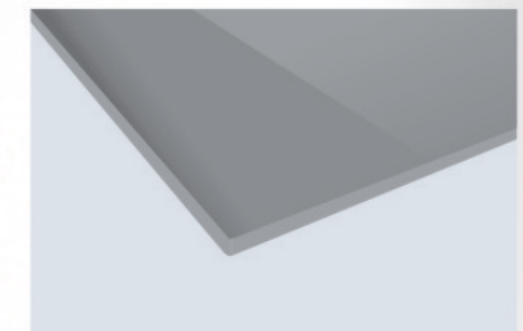


## GLASS COLOR

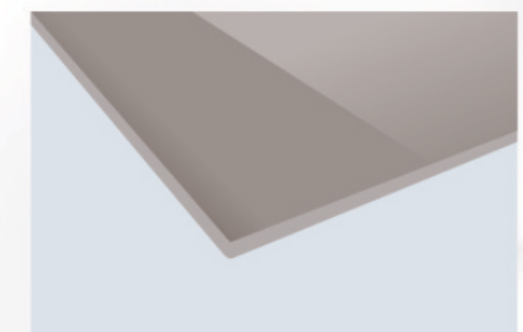
• Side panel material



**ZS-GC01**  
Full transparent glass



**ZS-GC02**  
Grey Transparent Glass

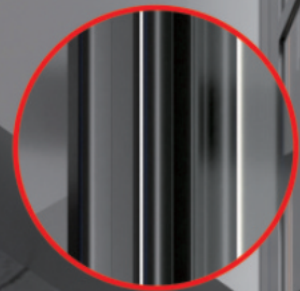


**ZS-GC03**  
Brown transparent glass



## DOOR TYPE

Four ergonomic door opening methods designed with ease of access as a principle, enhancing human comfort.



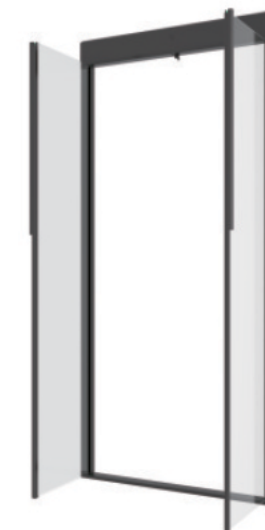
Door frame light strip  
(optional)



Single Door Opening



Unequal Double Door Opening



Center Opening with Vertical Frame



Center Opening with Horizontal Border



## PLATFORM STYLE

We present the elevators as a form of spatial art, immersing our clients in a refined and elegant experience.



◀ ZS-CW02  
Artistic Glass with Black  
and White Gradient



ZS-CW01  
Artistic Glass -Red and  
Black Gradient



ZS-CW03  
Artistic Glass-Radial Lines



ZS-CW04  
Wood Grain Carbon  
Aluminum Panel



ZS-CW05  
Rock Panel

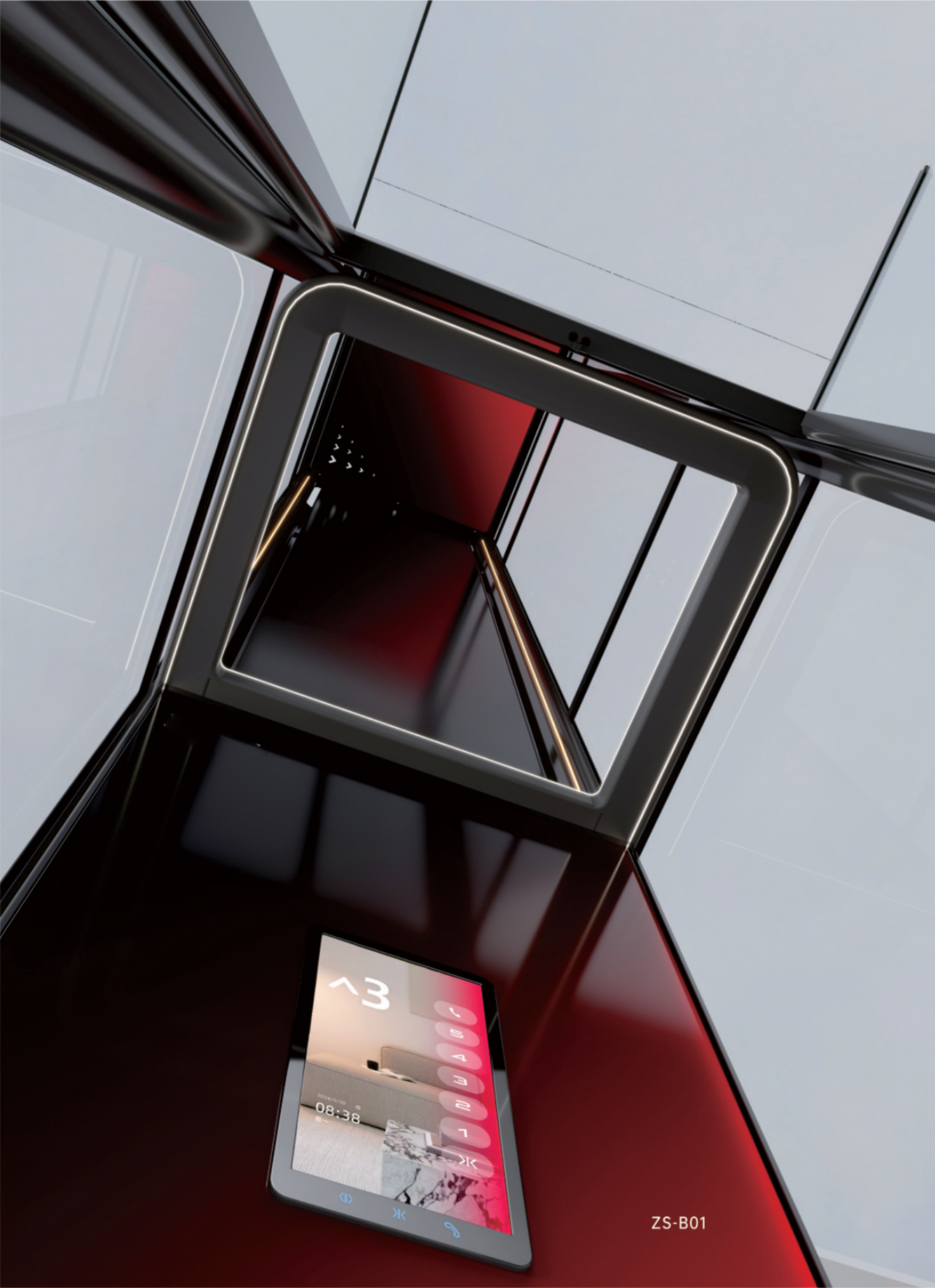


ZS-CW06  
Stainless Steel



## PLATFORM WITH CEILING STYLE

We transform the elevator into a journey of refinement and elegance, ensuring every customer enjoys a unique and exceptional experience through our meticulous craftsmanship.



ZS-B01



ZS-B02



ZS-B03



ZS-B04



# PLATFORM WITH CABIN STYLE

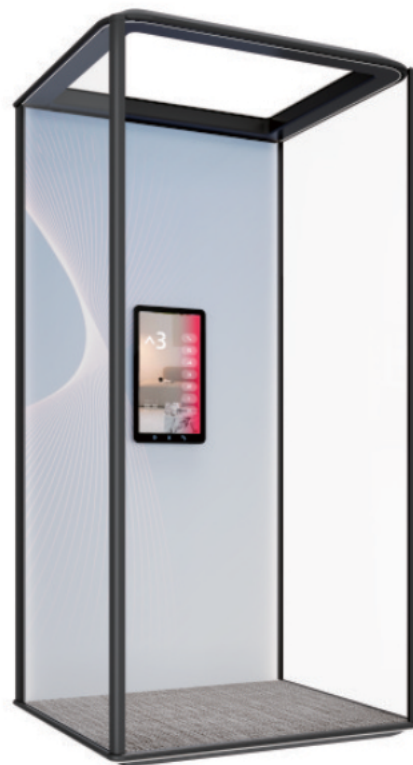
Luxury remains timeless, with innovative features that set new standards. Enjoy a wide range of customization options and let your imagination soar.



ZS-C01



ZS-C02



ZS-C03

**SUPERIOR**  
ELEVATORS



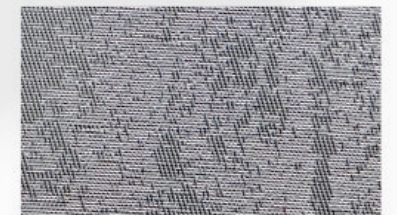


## PLATFORM FLOOR

### • Woven Series



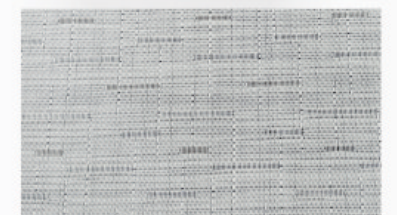
DB-A01



DB-A02

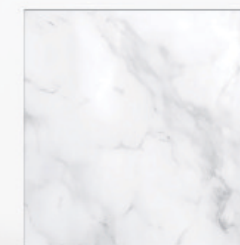


DB-A03



DB-A04

### • Rock Panel Series or PVC



DB-B01



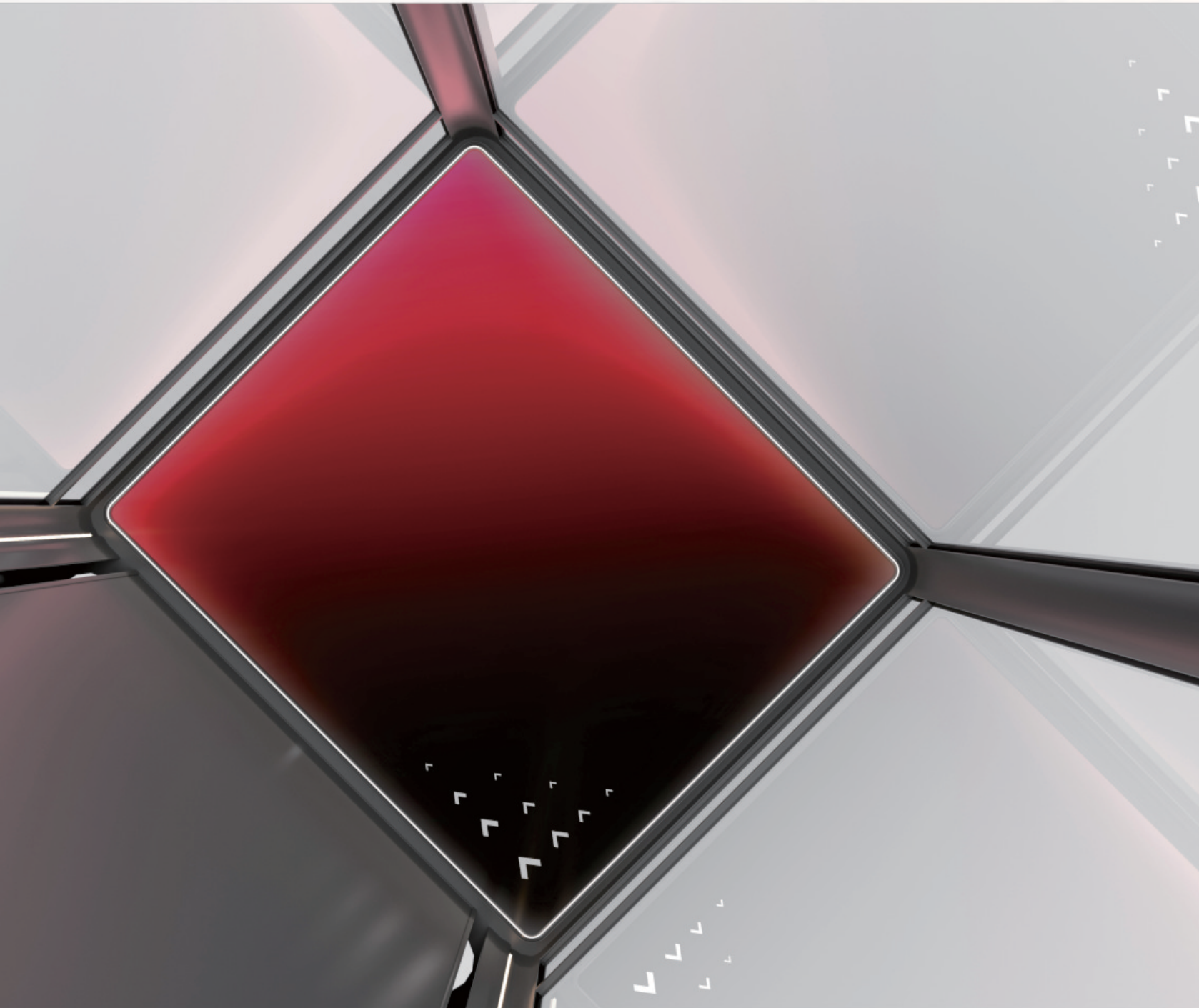
DB-B02



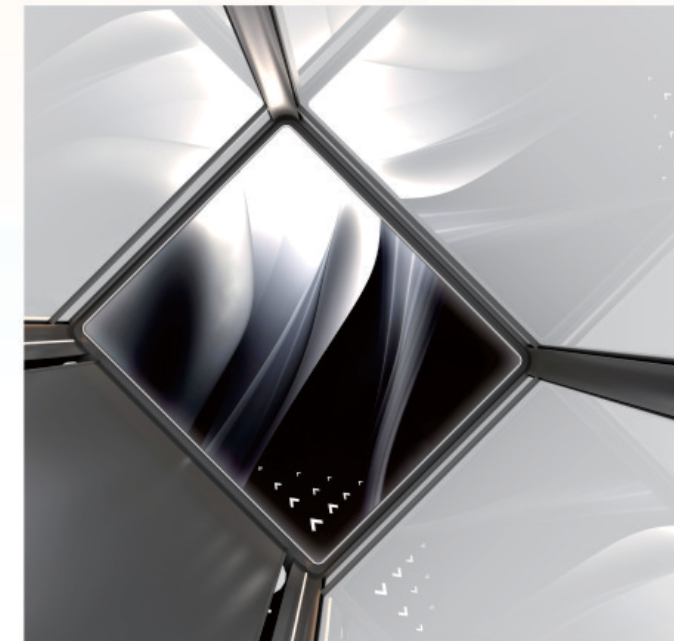
DB-B03



# CEILING



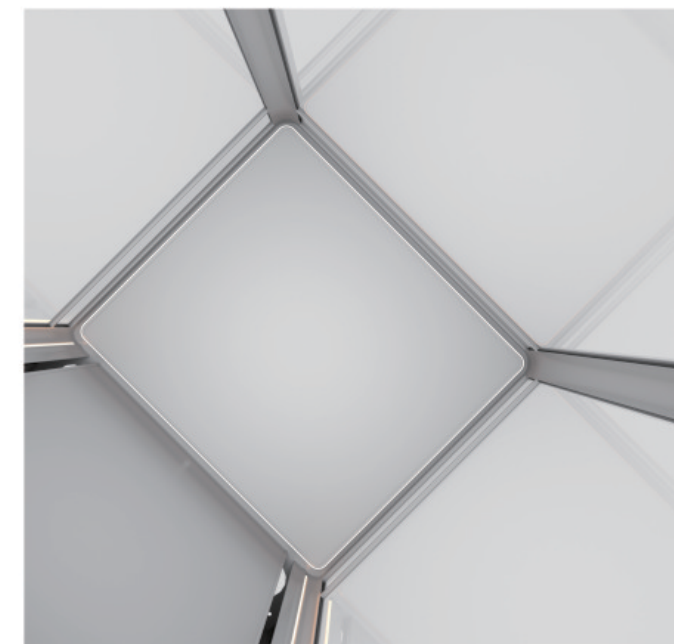
Artistic Glass, Black and Red Gradient  
ZS-DD01



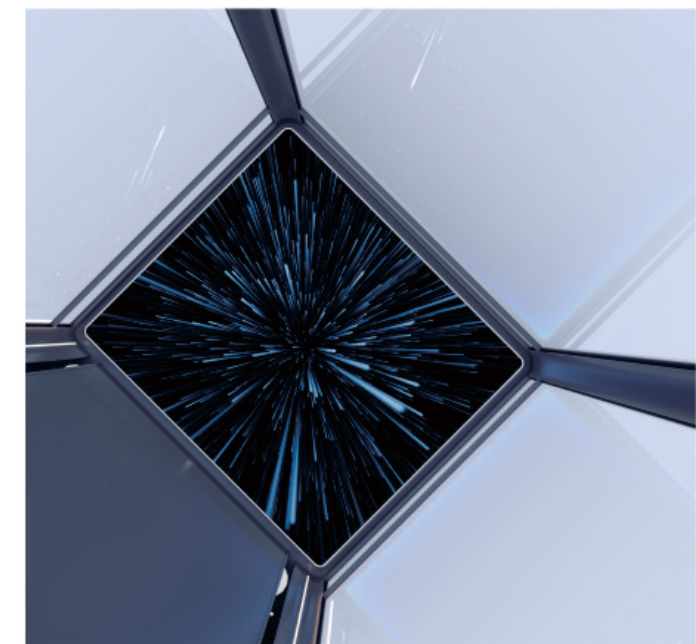
Artistic Glass, Black and White Gradient  
ZS-DD02



Artistic Glass, Radiating Lines  
ZS-DD03



Carbon Aluminum Panel  
ZS-DD04



Starry Sky Ceiling  
ZS-DD05



# LOP & COP

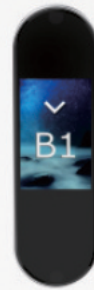
Intelligent and Personalized

## HOP



ZHOP-04

Touch Screen (Standard)



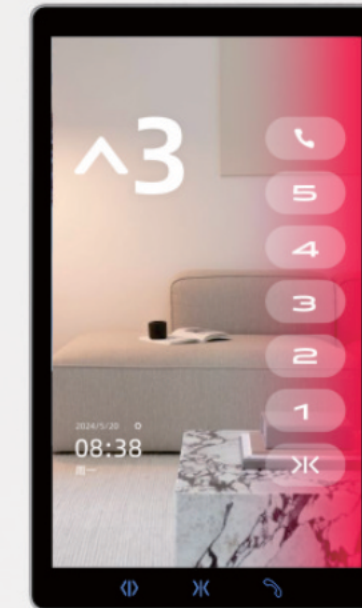
ZHOP-05

Gesture recognition



ZHOP-02

Touch Button (Long Strip)



ZCOP-05/06  
15.6/18.5 inch  
Intelligent touch screen

## COP



ZCOP-03

Oval with touch-tone



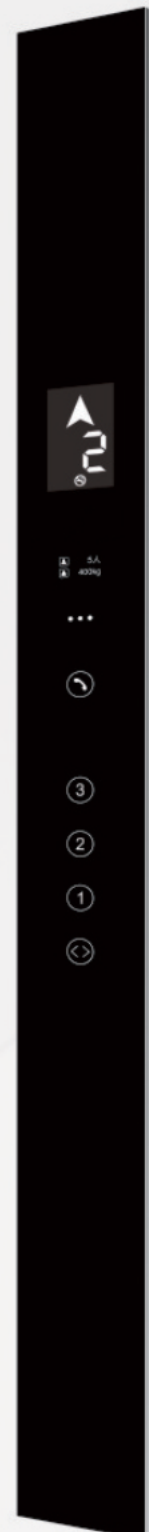
ZCOP-04

Oval with rotary knob



ZCOP-07

Glass panel push-button type (horizontal)



ZCOP-08

Glass Integrated COP with  
push-button